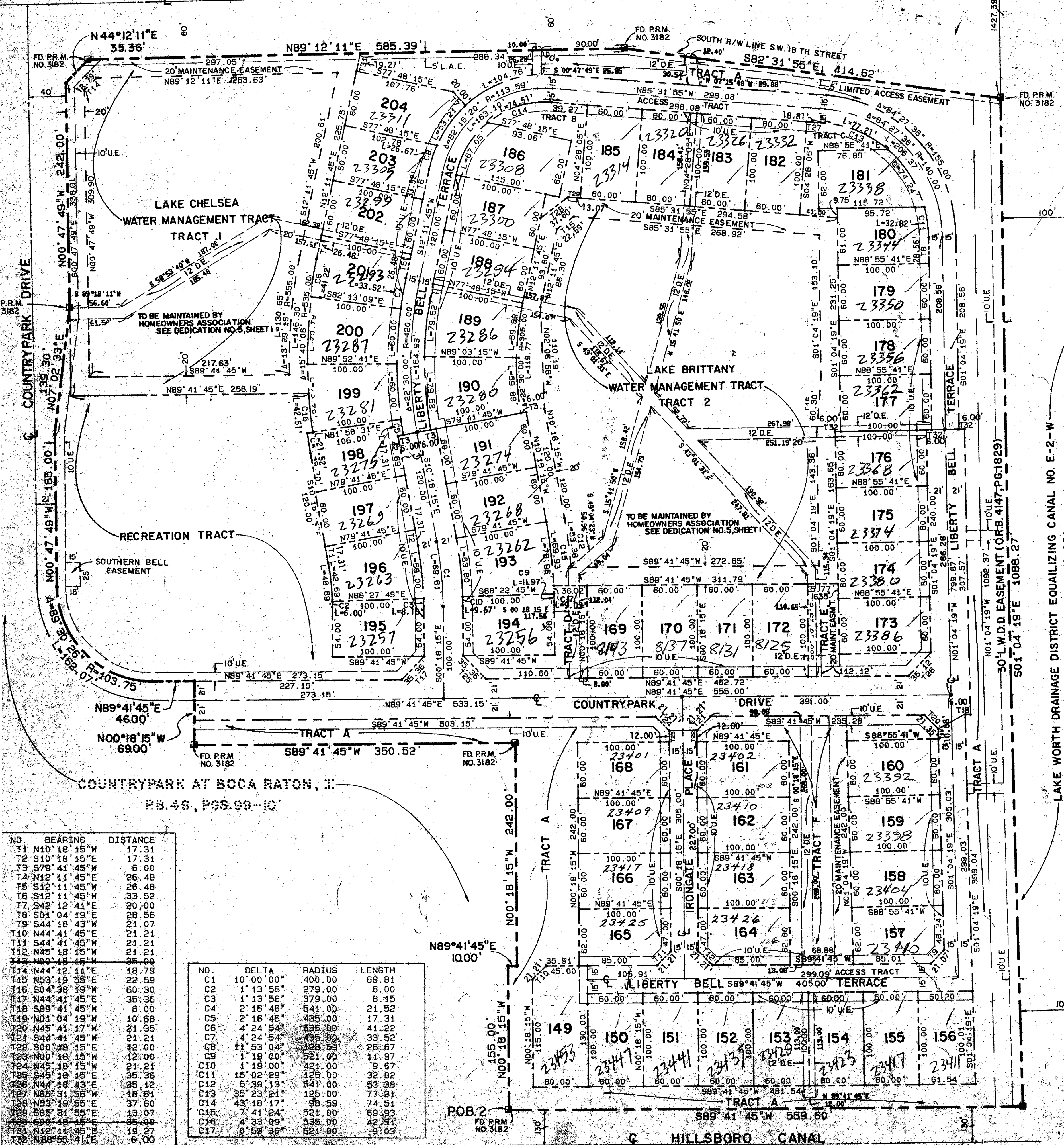


47/127

S89°59'00"W 343.23'
29 28
32 33
N.E. CORNER
SEC 32/47/32

S.W. 18TH STREET



COUNTRYPARK
AT BOCA RATON, II
PART OF BOCA RIO, A P.U.D.
SITUATE IN THE NORTHEAST ONE QUARTER OF
SECTION 32, TOWNSHIP 47 SOUTH, RANGE 42
EAST, PALM BEACH COUNTY, FLORIDA.

NOVEMBER, 1983 SHEET 3 OF 3

SUNSHINE STATE PARKWAY (FLORIDA TURNPIKE)

LAKE WORTH DRAINAGE DISTRICT EQUALIZING CANAL NO. E-2-W
O.R.B. 1732, PGS. 612-651

LIBERTY BELL TERRACE

IRONGATE PLACE

POB 2

NO.	BEARING	DISTANCE
T1	N10°18'15"W	17.31
T2	S10°18'15"E	17.31
T3	S79°41'45"E	6.00
T4	N42°11'45"E	26.48
T5	S42°11'45"E	26.48
T6	S12°11'45"E	33.52
T7	S42°12'41"E	20.00
T8	S01°04'19"E	28.56
T9	S44°18'43"W	21.07
T10	N44°41'45"E	21.21
T11	S44°41'45"W	21.21
T12	N45°18'15"W	21.21
T13	N00°48'48"W	36.00
T14	N44°12'41"E	18.79
T15	N53°19'55"E	22.59
T16	S04°38'19"W	60.30
T17	N44°41'45"E	35.36
T18	S89°41'45"W	6.00
T19	N01°04'19"W	10.68
T20	N45°41'17"W	21.35
T21	S44°41'45"W	21.21
T22	S00°38'04"E	12.00
T23	N00°18'15"W	12.00
T24	N45°18'15"W	21.21
T25	S45°18'15"E	35.36
T26	N44°18'43"E	35.12
T27	N85°31'55"W	18.94
T28	N53°19'55"E	37.60
T29	S85°31'55"E	13.07
T30	S00°48'48"E	36.00
T31	N12°11'45"E	19.27
T32	N88°55'41"E	6.00

NO.	DELTA	RADIUS	LENGTH
C1	10°00'00"	400.00	69.81
C2	1°13'56"	279.00	6.00
C3	1°13'56"	379.00	8.15
C4	2°16'46"	541.00	21.52
C5	2°16'46"	435.00	17.31
C6	4°24'54"	535.00	41.22
C7	4°24'54"	435.00	33.52
C8	11°53'04"	128.59	26.67
C9	1°19'00"	521.00	11.97
C10	1°19'00"	421.00	9.67
C11	15°02'29"	125.00	32.82
C12	5°38'13"	541.00	53.38
C13	35°23'21"	125.00	77.84
C14	43°18'17"	98.59	74.54
C15	7°41'24"	521.00	69.83
C16	4°33'09"	535.00	42.81
C17	0°58'36"	521.00	9.03

Subdivision * Countrypark 2
 BOOK 47 PAGE 127
 FLOOD ZONE A-1 FLOOD MAP # 240B
 QUAD # 54 ZONING RS
 SE PUD ZIP CODE 33433
 PUD NAME Boca Rio



P.U.D. TABULAR DATA

AREA	22.14	Acres
UNITS	56	Units
DENSITY	3.62	DU/AC.
OPEN SPACE/RECREATION	5.93	AC
ROADS & R/W'S	2.83	AC
WATER BODIES	5.43	AC
ZONING CLASSIFICATION	RS	

Meridian Surveying and Mapping Inc.
 1000 S. PALM BEACH, FLORIDA
 DRAWN M.E.H. DATE NOV 1983
 CHECKED SCALE 1" = 60'
 DRAWING NO. 83-P-029
 COUNTRYPARK AT BOCA RATON, II
 PART OF BOCA RIO, A P.U.D.

RS PUD
0213-002
47/127